



MONTHLY MEMBERSHIP PROGRESS REPORT

District 105NE

Results as of: 06/30/2019

GMT: JOOST PAIJMANS

LOCATION ENGLAND

GMT CA

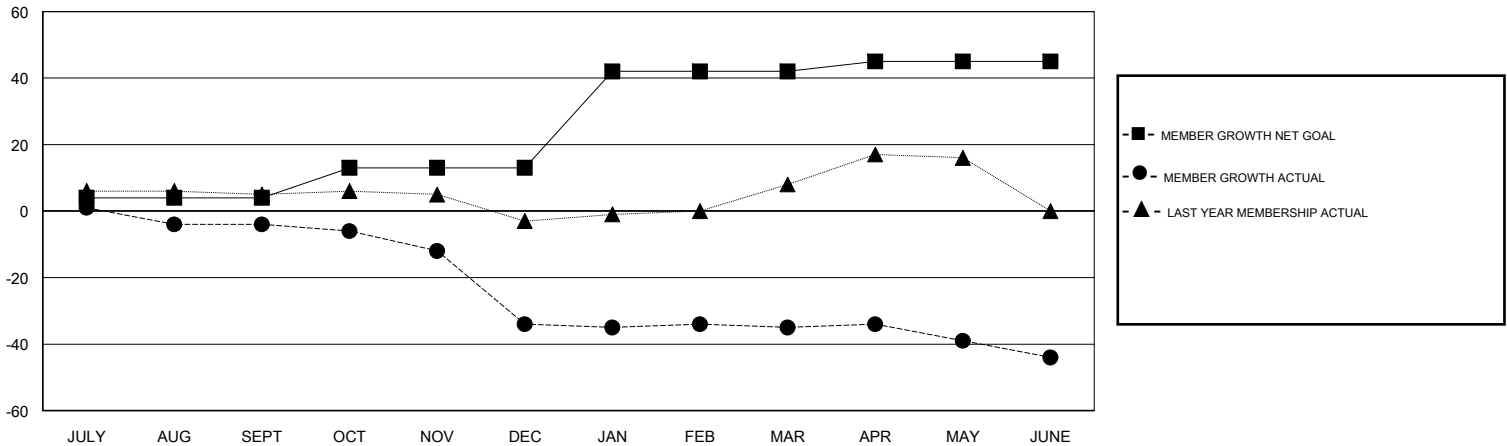
Clubs			
RESULTS FOR 2018-2019			
QUARTER	NEW CLUB GOAL	NEW CLUBS	DROPPED CLUBS
JULY/AUG/SEPT	0	0	0
OCT/NOV/DEC	0	0	0
JAN/FEB/MAR	1	0	1
APR/MAY/JUNE	0	0	0

Members			
RESULTS FOR 2018-2019			
QUARTER	MEMBER GROWTH NET GOAL	MEMBER GROWTH ACTUAL	DROPPED MEMBERS ACTUAL (including transfers)
JULY/AUG/SEPT	4	4	8
OCT/NOV/DEC	9	11	38
JAN/FEB/MAR	29	12	13
APR/MAY/JUNE	3	11	20

GOALS AND ACTUAL NEW CLUBS CUMULATIVE



GOALS AND ACTUAL MEMBERS CUMULATIVE



DROPPED CLUBS: 1

15 CLUBS OF 34 ADDED 1 OR MORE NEW MEMBERS

GENDER DISTRIBUTION

MALE 457 (77.33%)
 FEMALE 134 (22.67%)
 Women Percentage Fiscal Year Goal: 30%

DROPPED MEMBERS

[CLICK HERE FOR CUMULATIVE MEMBERSHIP DATA](#)

DECEASED	8
CLUB CANCELLED	0
OTHER	71
TOTAL	79

TOTAL FAMILY UNIT MEMBERS	55
FAMILY MEMBERS PAYING HALF DUES	28